



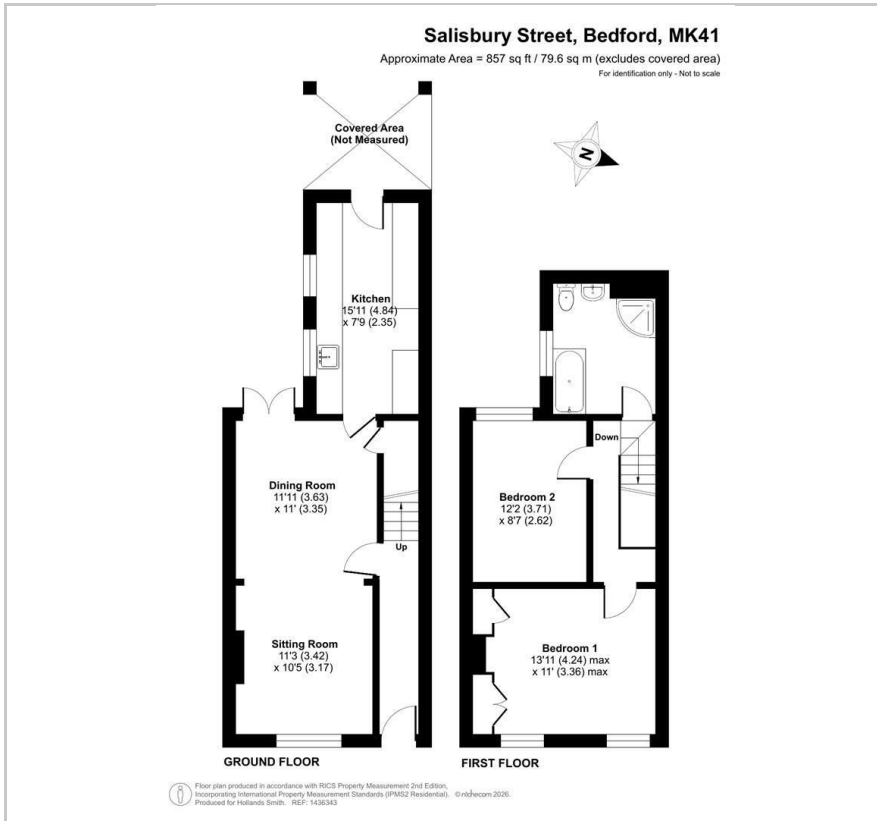
**28 Salisbury Street**

, Bedford, MK41 7RE

**£285,000**



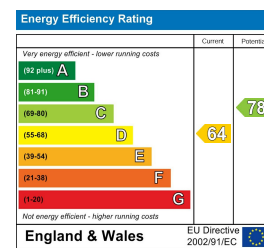
## Floor Plan



## Area Map



## Energy Efficiency Graph



## Viewing

Please contact our Bedford Office on 01234 216612 if you wish to arrange a viewing appointment for this property or require further information.



Situated in the popular Prime Ministers area of the town, this period terraced home is well-presented throughout and is available with no upward chain. Providing a popular layout, there is an open plan living room with fireplace, a spacious kitchen/breakfast room with plenty of storage and there are two double bedrooms. The first floor bathroom has been replaced and has a white suite including a separate shower cubicle. The loft space is fully boarded and has a hatch with fitted ladder. Further benefits include gas to radiator heating from a combination boiler, full uPVC double glazing (most recently replaced including some in the sash style) and there are period features such as stripped pine floors and doors and picture rails. Outside, there is a sunny west facing courtyard garden which is block paved, part walled and has a covered veranda.

The immediate area is well-served by two local convenience stores, popular pubs, a café and a well-regarded Primary School. In addition, Bedford Park is just around the corner, as is Robinson Pool & Gym Complex. Bedford town centre is only a short walk away and offers a wider choice of shops and the mainline rail station is also within easy reach on foot, offering fast links into London St Pancras. EER: D



**163 Castle Road, MK40 3RT**

**Tel: 01234 216612**

**[www.hollandsmith.co.uk](http://www.hollandsmith.co.uk)**